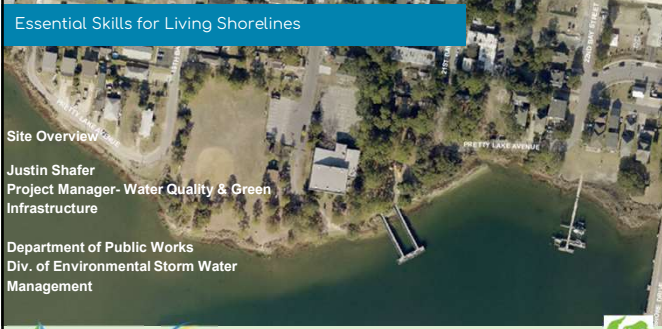


**Essential Skills for Living Shorelines**



Site Overview

Justin Shafer  
Project Manager- Water Quality & Green Infrastructure

Department of Public Works  
Div. of Environmental Storm Water Management

CHESAPEAKE BAY Landscape Professional | Living Shoreline Collaborative | NORFOLK

1

---

---

---

---

---

---


---

---

**East Ocean View Community Center Living Shoreline**

Site Overview

- Project Goals
- Key Elements
- Adjacent Past Work
- Adjacent Future Work



CHESAPEAKE BAY Landscape Professional | Living Shoreline Collaborative | NORFOLK

2

---

---

---

---

---

---


---

---

**East Ocean View Community Center Living Shoreline**

Project Goals

- Improve Water Quality
- Enhance Wildlife Habitat
- Maximize Pollutant Reductions for Bay TMDL Goals
- Enhance Park Space
- Protect Physical Infrastructure



NORFOLK RESILIENT CITY

CHESAPEAKE BAY Landscape Professional | Living Shoreline Collaborative | NORFOLK

3

---

---

---

---

---

---

---

---

### East Ocean View Community Center Living Shoreline

#### Key Elements

- Wetland Restoration
- Buffer Enhancement
- Erosion Control
- Upland Drainage
- Water Access
- Viewshed



4

---

---

---

---

---

---

---

---

---

---

### East Ocean View Community Center Living Shoreline

#### Adjacent Past Work

- Runoff to central shoreline addressed in 2016 with rain garden and buffer planting
- Initial success, but vegetation died off due to drought and trampling



5

---

---

---

---

---

---

---

---

---

---

### East Ocean View Community Center Living Shoreline

#### Adjacent Past Work

- Heavily eroded section east of fishing pier restored in 2017
- Oyster castles placed as sill
- Sand fill to raise elevation
- Marsh vegetation planted
- Good oyster recruitment on blocks and marsh behind sill has continued to expand



6

---

---

---

---

---

---

---

---

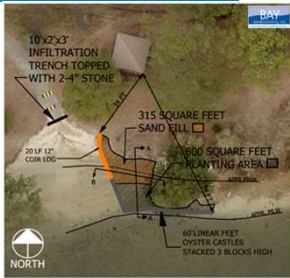
---

---

### East Ocean View Community Center Living Shoreline

#### Adjacent Past Work

- Heavily eroding section next to kayak launch restored in 2022
- Oyster castles placed as sill
- Coir logs higher on slope to hold sand
- Marsh vegetation planted
- Infiltration trench to slow runoff at kayak launch



7

---

---

---

---

---

---

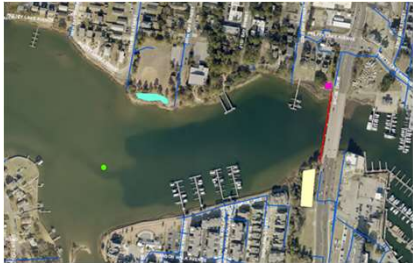
---

---

### East Ocean View Community Center Living Shoreline

#### Adjacent Future Work

- Storm Water Outfall Upgrades
- Flood Gate
- Storm Water Pump Station
- Wetland Mitigation
- Boat Ramp
- No Wake Zone Removal



8

---

---

---

---

---

---

---

---