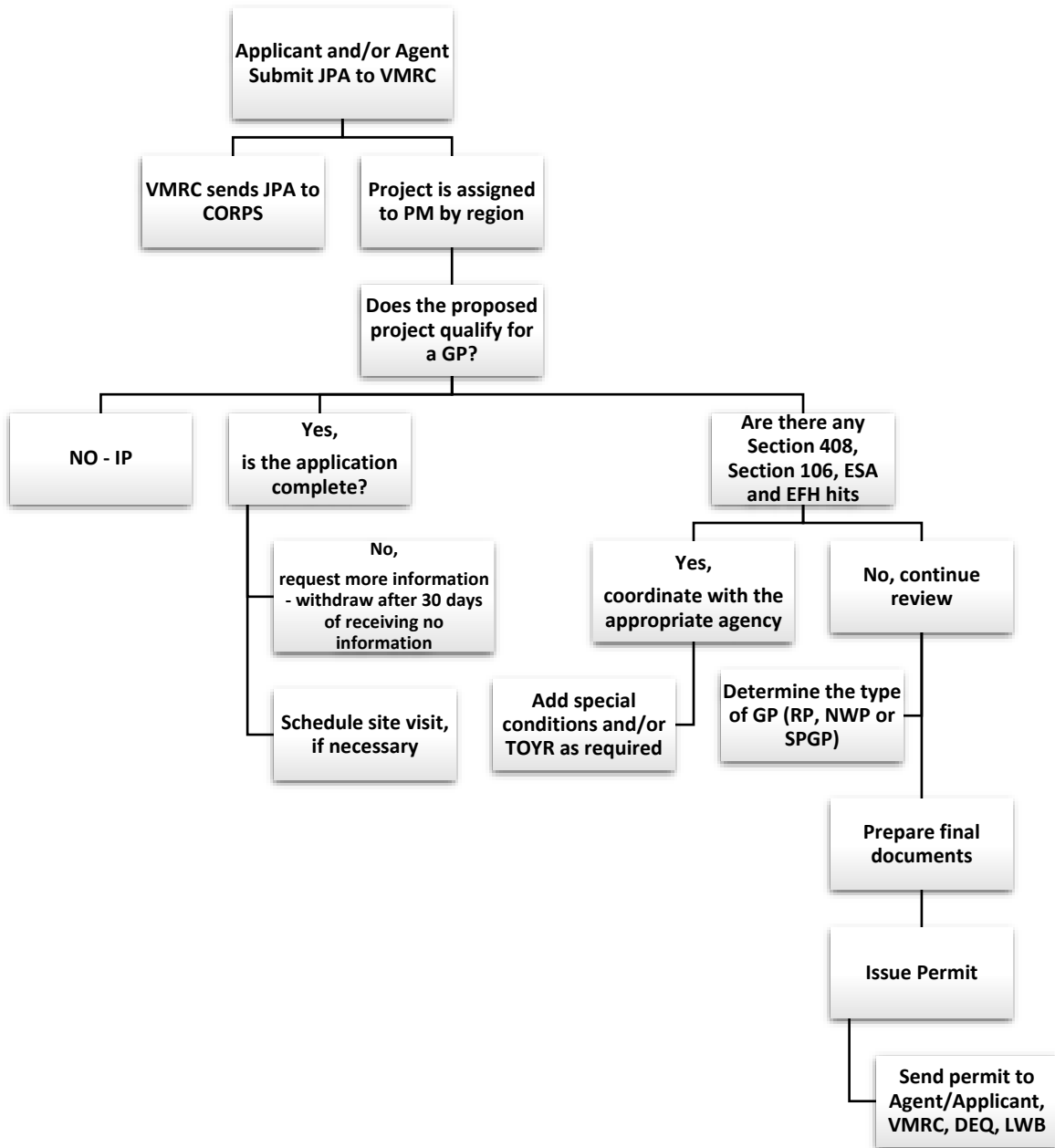


Permit Processing Map





Corps Shoreline Stabilization Permits

Permit	Statutory Authority	Limits	Other Information
NWP 13 – Bank Stabilization	10/404	<ul style="list-style-type: none"> • Cannot be more than 500 feet along the bank (unless waived by DE) • Cannot exceed 1 cubic yard per running foot (unless waived by DE) 	<p>Activity cannot impair surface water flow into or out of waters of the U.S. Temporary fills must be removed in their entirety and the affected areas returned to pre-construction elevations. Native plant species appropriate for site conditions, including salinity, must be used for bioengineering or vegetative bank stabilization.</p>
NWP 18 – Minor Discharges	10/404	<ul style="list-style-type: none"> • Fill cannot exceed 25 cubic yards discharged below plane of OHWM/HTL 	<p>Does not authorize discharges for stream diversions.</p>
NWP 27 – Aquatic Habitat Restoration, Enhancement, and Establishment Activities	10/404	None	<p>Does not authorize stream channelization. Does not authorize relocation or conversion of tidal waters. Does not authorize conversion of natural wetlands or streams, except for relocation activities. Compensatory mitigation is not required for NWP 27 activities; however, a detailed monitoring plan is required. NOAA/NMFS coordination is required</p>
NWP 54 – Living Shorelines	10/404	<ul style="list-style-type: none"> • Cannot extend farther than 30 feet channelward of mean low water in tidal waters (unless waived by DE) • Cannot be more than 500 feet along the bank (unless waived by DE) 	<p>May include stone or reef structures to protect the shoreline from low to moderate energy waves. Living shorelines must have a substantial biological component, either tidal or lacustrine fringe wetlands or oyster or mussel reef structures. Does not authorize beach nourishment or land reclamation activities. NOAA/NMFS coordination is required</p>
RGP 19 - Shoreline stabilization	10/404	<p>Shoreline stabilization projects are limited to less than 1 acre of fill material</p>	<p>Vegetated wetland impacts cannot exceed the linear feet of activity along the shoreline.</p>

