

Essential Skills for Living Shorelines

Site Overview

Justin Shafer
Project Manager- Water Quality & Green
Infrastructure

Department of Public Works
Div. of Environmental Storm Water
Management

East Ocean View Community Center Living Shoreline

Site Overview

- Project Goals
- Key Elements
- Adjacent Past Work
- Adjacent Future Work

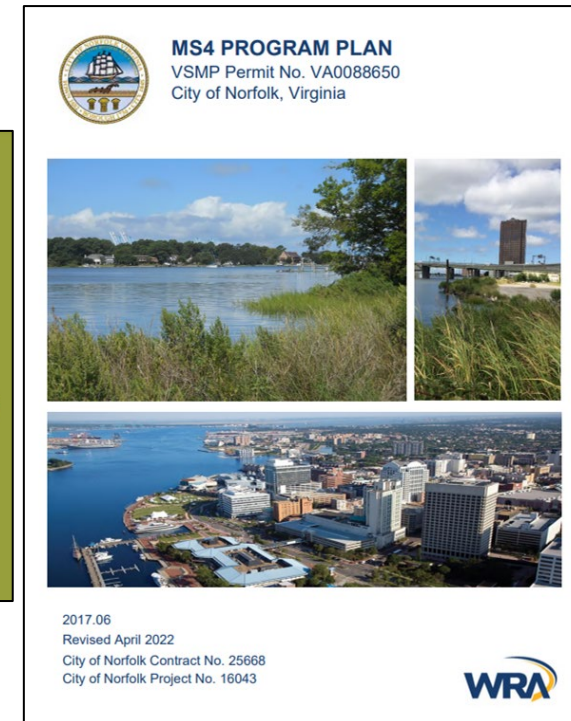
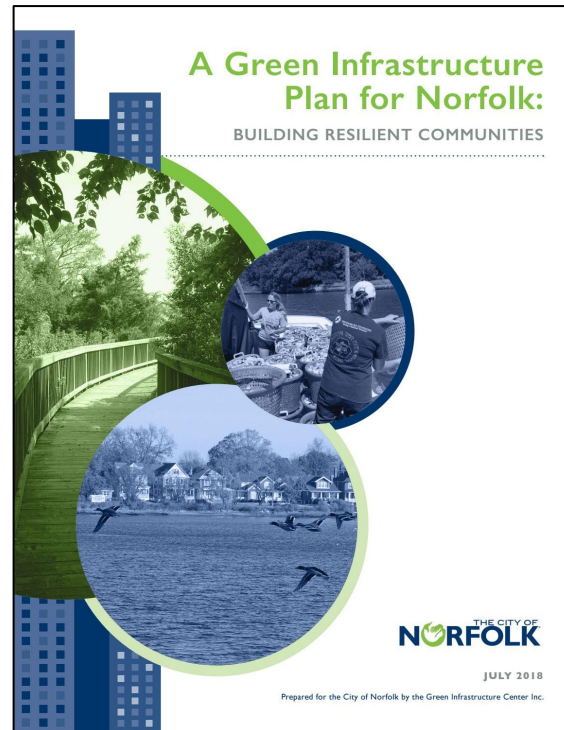


East Ocean View Community Center Living Shoreline

Project Goals

- Improve Water Quality
- Enhance Wildlife Habitat
- Maximize Pollutant Reductions for Bay TMDL Goals
- Enhance Park Space
- Protect Physical Infrastructure

NORFOLK RESILIENT CITY



East Ocean View Community Center Living Shoreline

Key Elements

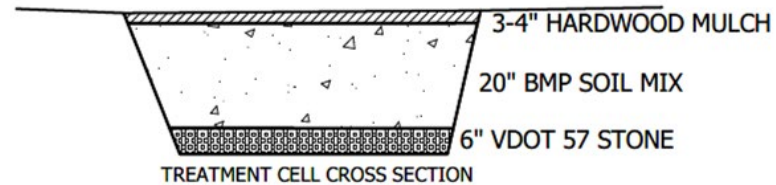
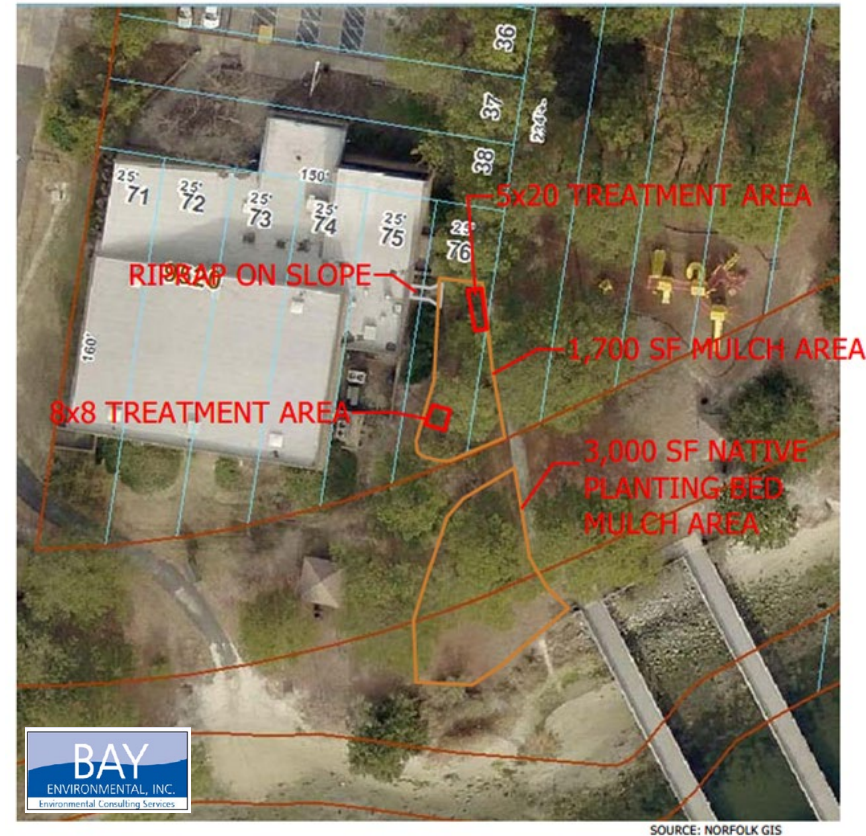
- Wetland Restoration
- Buffer Enhancement
- Erosion Control
- Upland Drainage
- Water Access
- Viewshed



East Ocean View Community Center Living Shoreline

Adjacent Past Work

- Runoff to central shoreline addressed in 2016 with rain garden and buffer planting
- Initial success, but vegetation died off due to drought and trampling



East Ocean View Community Center Living Shoreline

Adjacent Past Work

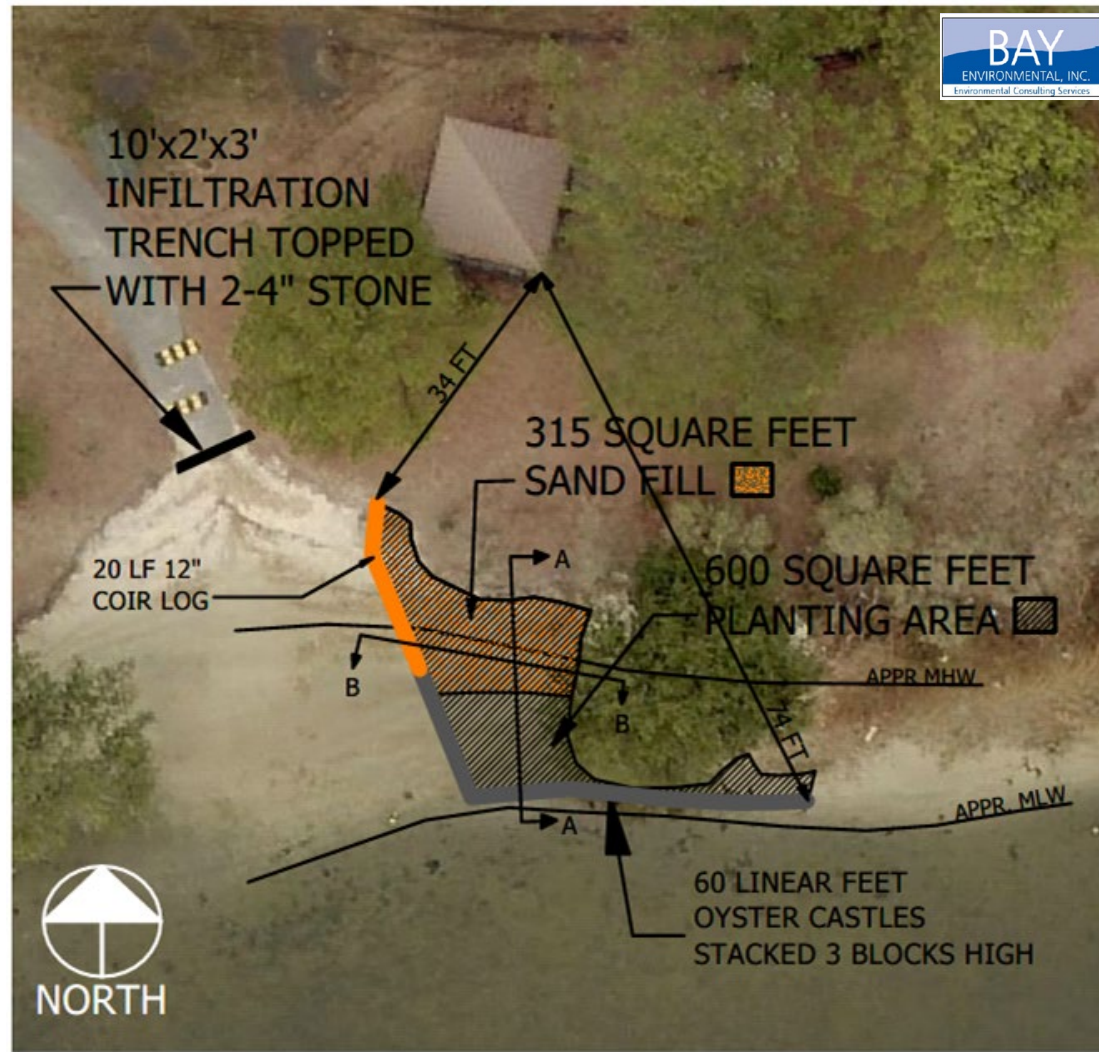
- Heavily eroded section east of fishing pier restored in 2017
- Oyster castles placed as sill
- Sand fill to raise elevation
- Marsh vegetation planted
- Good oyster recruitment on blocks and marsh behind sill



East Ocean View Community Center Living Shoreline

Adjacent Past Work

- Heavily eroding section next to kayak launch restored in 2022
- Oyster castles placed as sill
- Coir logs higher on slope to hold sand
- Marsh vegetation planted
- Infiltration trench to slow runoff at kayak launch



East Ocean View Community Center Living Shoreline

Adjacent Future Work

- Storm Water Outfall Upgrades
- Flood Gate
- Storm Water Pump Station
- Wetland Mitigation
- Boat Ramp
- No Wake Zone Removal

