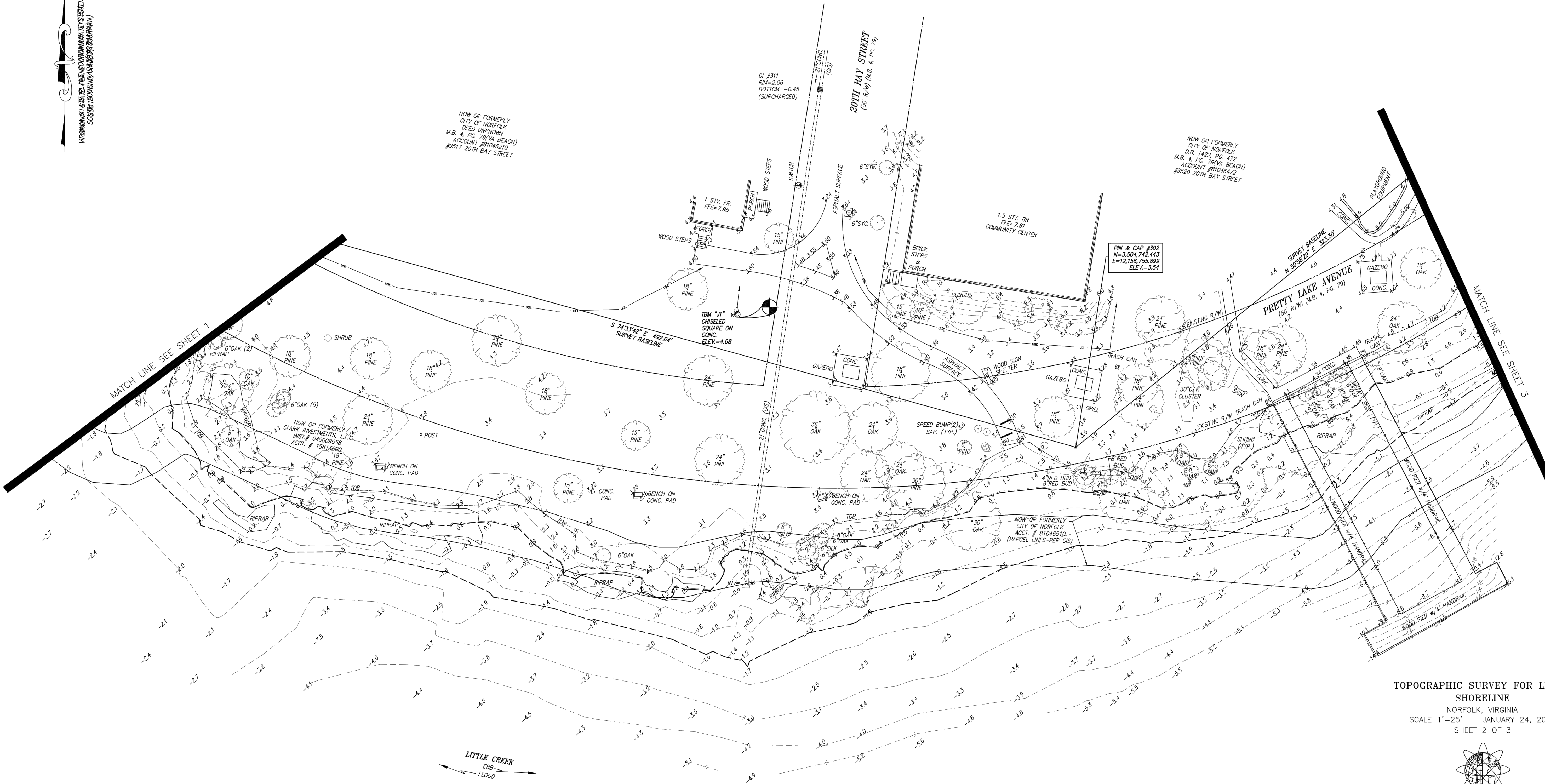


VIRGINIA STATE BOARD OF PROFESSIONAL SURVEYORS  
 30800 TREVINO DRIVE, SUITE 200, FALLS CHURCH, VA 22044



NOW OR FORMERLY  
 CITY OF NORFOLK  
 DEED UNKNOWN  
 M.B. 4, PG. 79 (VA BEACH)  
 ACCOUNT #81046210  
 #9517 20TH BAY STREET

DI #311  
 RIM=-2.06  
 BOTTOM=-0.45  
 (SURCHARGED)

20TH BAY STREET  
 (50' R/W) (M.B. 4, PG. 79)

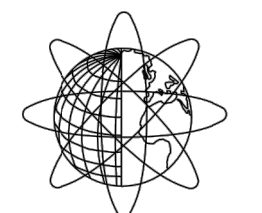
1.5 STY. BR.  
 FFE=7.81  
 COMMUNITY CENTER

PIN & CAP #302  
 N=3,504,742.443  
 E=12,156,755.899  
 ELEV.=3.54

NOW OR FORMERLY  
 CITY OF NORFOLK  
 D.S. 1422, PG. 472  
 M.B. 4, PG. 79 (VA BEACH)  
 ACCOUNT #81046472  
 #9520 20TH BAY STREET

SURVEY BASELINE  
 N 50°36'29" E 323.30'  
 PRETTY LAKE AVENUE  
 (50' R/W) (M.B. 4, PG. 79)

**TOPOGRAPHIC SURVEY FOR LIVING SHORELINE**  
 NORFOLK, VIRGINIA  
 SCALE 1"=25' JANUARY 24, 2022  
 SHEET 2 OF 3



**PRECISION MEASUREMENTS, INC.**  
 SURVEYORS - UAS - HYDROGRAPHIC - 3D LASER SCANNING  
 629 PHOENIX DRIVE, SUITE 100  
 VIRGINIA BEACH, VIRGINIA 23452  
 TEL.: (757) 368-0945  
 FAX: (757) 368-9375  
 www.precisionmeasurements.com  
 VIRGINIA BEACH - NEWPORT NEWS - RICHMOND  
 CHANTILLY, VIRGINIA - BALTIMORE, MARYLAND  
 FORT LAUDERDALE, FLORIDA

